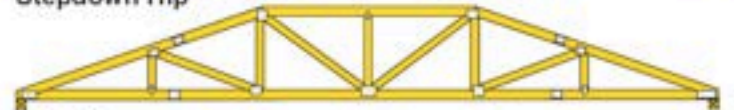


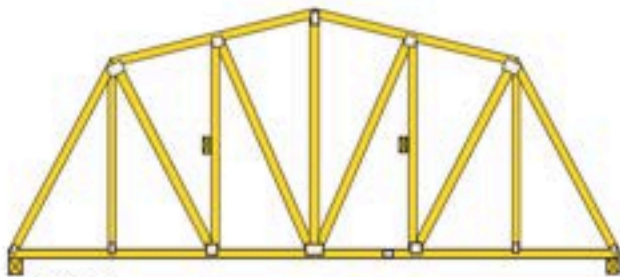
Piggyback



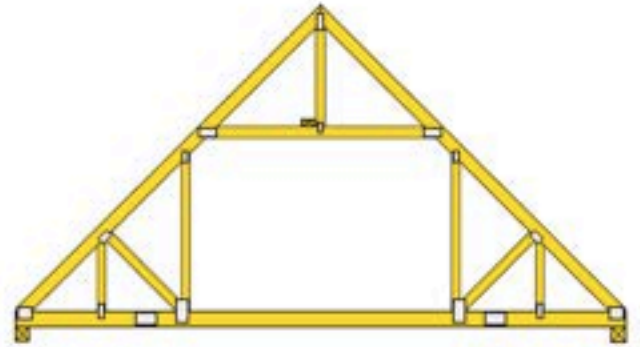
Stepdown Hip



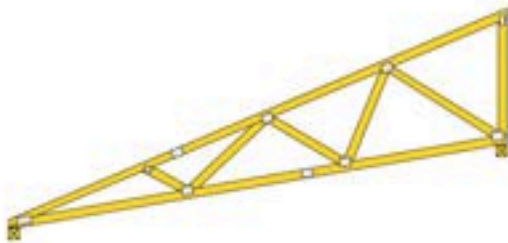
Hip Girder



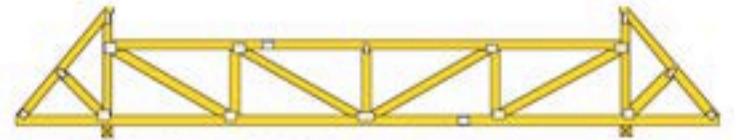
Gambrel



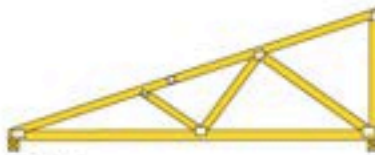
Room-In-Attic



Scissors Mono



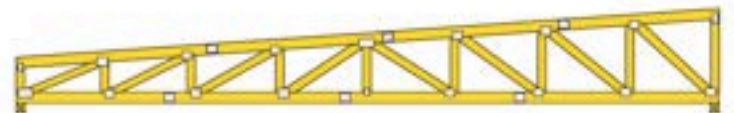
Double Cantilever With Parapets



Mono



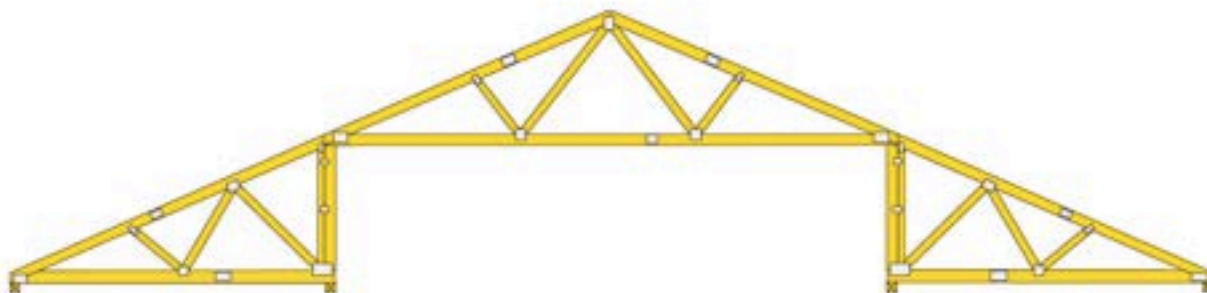
Flat Truss With Cantilever (Pratt Configuration)



Sloping Top Chord (Howe Configuration)



Floor Truss (System 42 - Modified Warren Configuration)



Three Piece Raised Center Bay -- Lengths 50' to 100'+