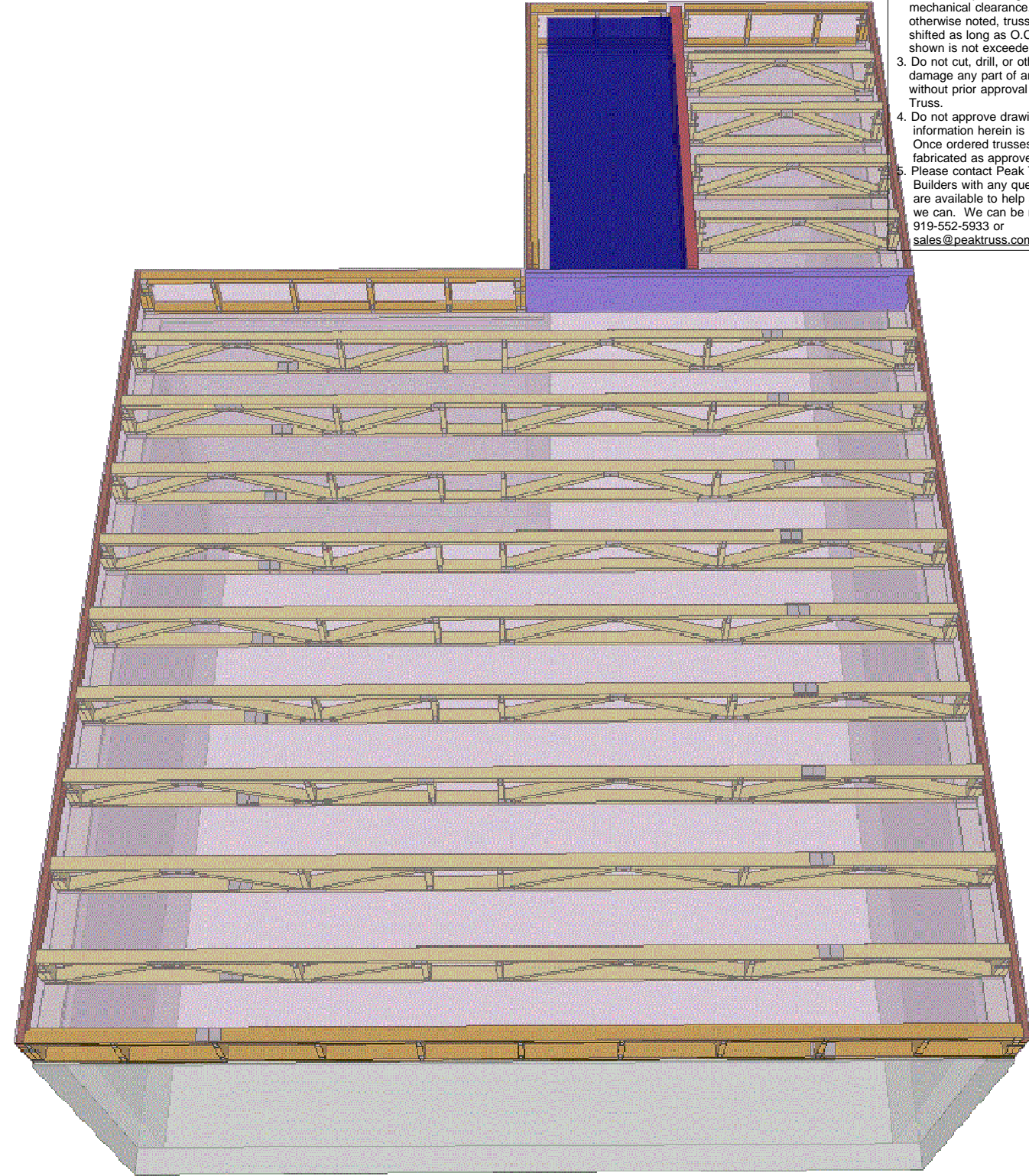
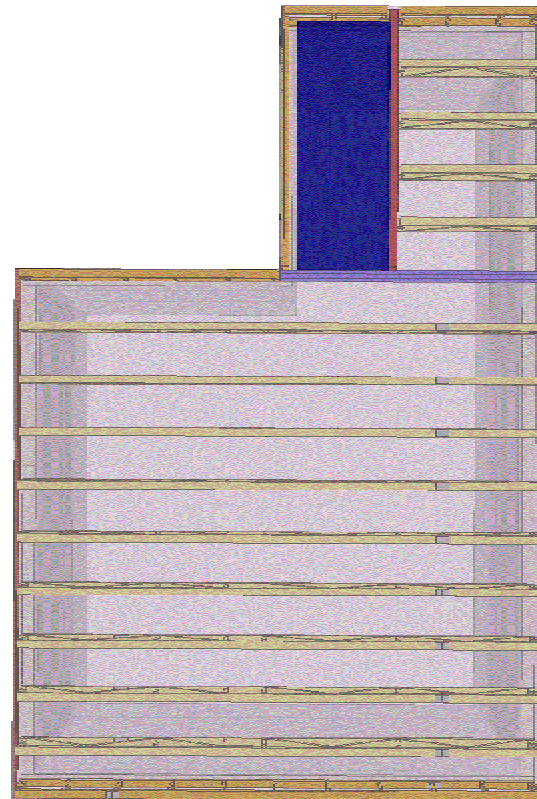
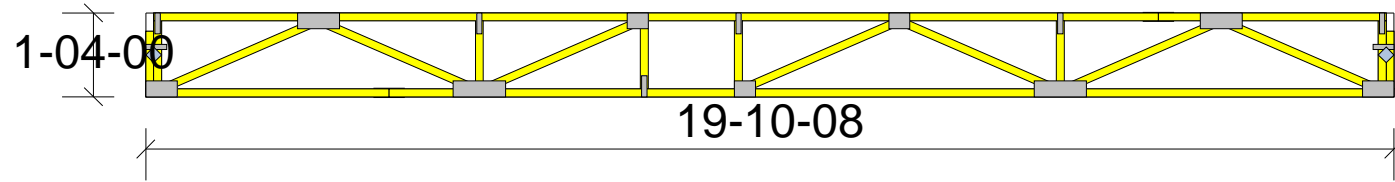


THIS LAYOUT IS TO BE USED AS A TRUSS PLACEMENT GUIDE ONLY.
PLEASE REFER TO BUILDING PLANS FOR BUILDING CONSTRUCTION AND DETAILS,
SUCH AS PLUMBING OR DUCT DROPS.



- Notes:
- Exterior dimensions shown are assumed to be:
 - Out-to-out of stud
 - Out-to-out of sheathing
 - Adjust truss locations as needed for plumbing and mechanical clearance. Unless otherwise noted, trusses may be shifted as long as O.C. spacing shown is not exceeded.
 - Do not cut, drill, or otherwise damage any part of any truss without prior approval from Peak Truss.
 - Do not approve drawings if any information herein is unclear. Once ordered trusses will be fabricated as approved.
 - Please contact Peak Truss Builders with any questions. We are available to help any way we can. We can be reached at 919-552-5933 or sales@peaktruss.com

Job #

PEAS0311-1A

Sample Floor Truss Layout
8675 Main Street
Anywhere NC
30999

Date Quoted:
03/11/16

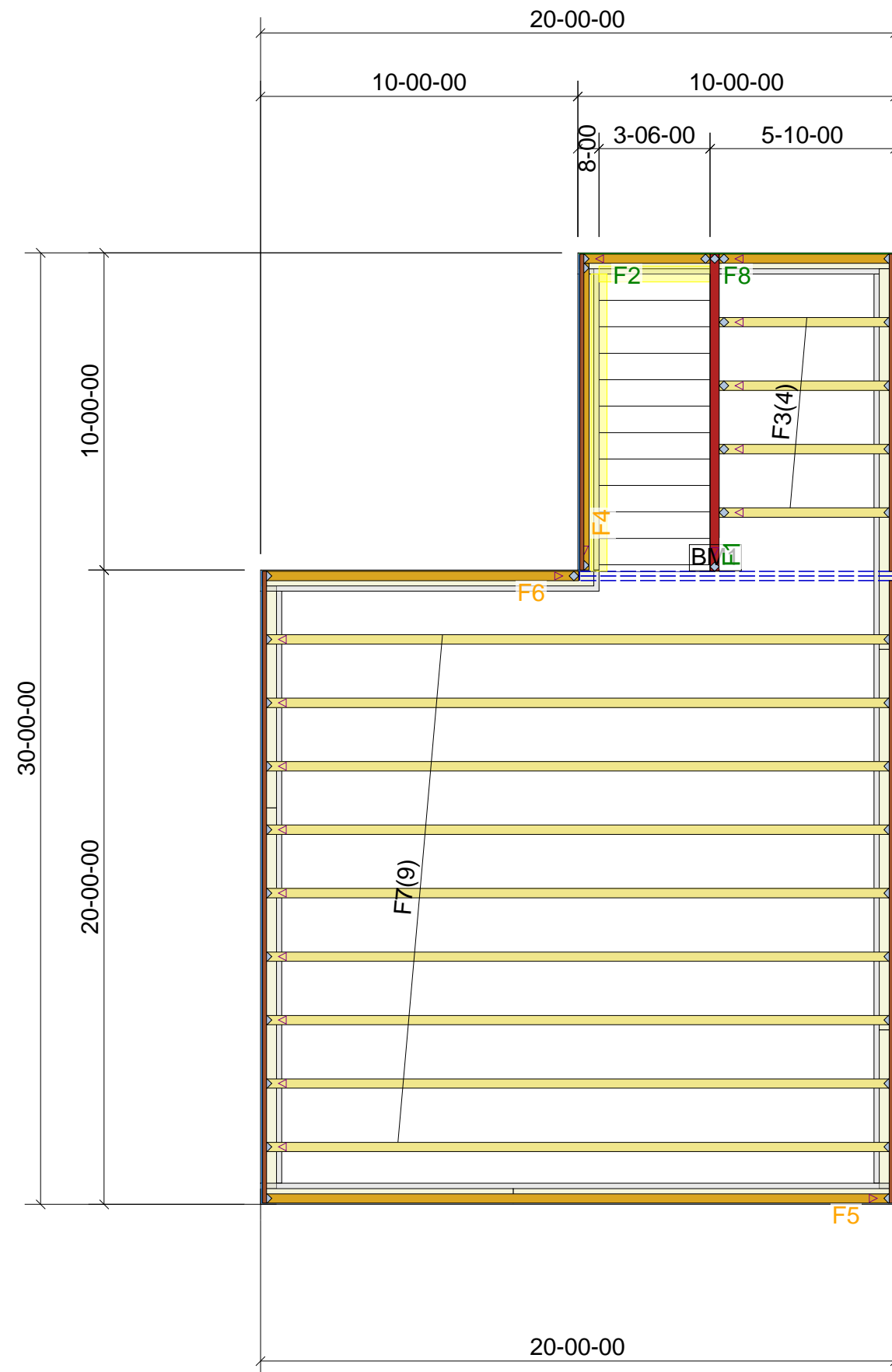
Designer:
HP

Valued Customer
1490 Comfort Ln
Sanford, NC
27330

Peak Truss Builders, LLC
PO Box 340, New Hill, NC 27562



THIS LAYOUT IS TO BE USED AS A TRUSS PLACEMENT GUIDE ONLY.
PLEASE REFER TO BUILDING PLANS FOR BUILDING CONSTRUCTION AND DETAILS,
SUCH AS PLUMBING OR DUCT DROPS.



- Notes:
- Exterior dimensions shown are assumed to be:
 - Out-to-out of stud
 - Out-to-out of sheathing
 - Adjust truss locations as needed for plumbing and mechanical clearance. Unless otherwise noted, trusses may be shifted as long as O.C. spacing shown is not exceeded.
 - Do not cut, drill, or otherwise damage any part of any truss without prior approval from Peak Truss.
 - Do not approve drawings if any information herein is unclear. Once ordered trusses will be fabricated as approved.
 - Please contact Peak Truss Builders with any questions. We are available to help any way we can. We can be reached at 919-552-5933 or sales@peaktruss.com

Peak Truss Builders, LLC.
Sample Floor Truss Layout
Floor Trusses @ Basement
16" depth; 2' O.C.
10' Ceiling

Truss Connector Total List		
Manuf	Product	Qty
	MSH422	4
USP	THDH412	1

Products					
PlotID	Length	Product	Plies	Net Qty	
BM1	10-00-00	1-3/4x16 LP-LVL 2650Fb-1.9E	2	2	

Job # **PEAS0311-1A**

Sample Floor Truss Layout
8675 Main Street
Anywhere NC
30999

Date Quoted: 03/11/16
Designer: **HP**

Valued Customer
1216 N. Main Street
Holly Springs, NC
27540

Peak Truss Builders, LLC
PO Box 340, New Hill, NC 27562