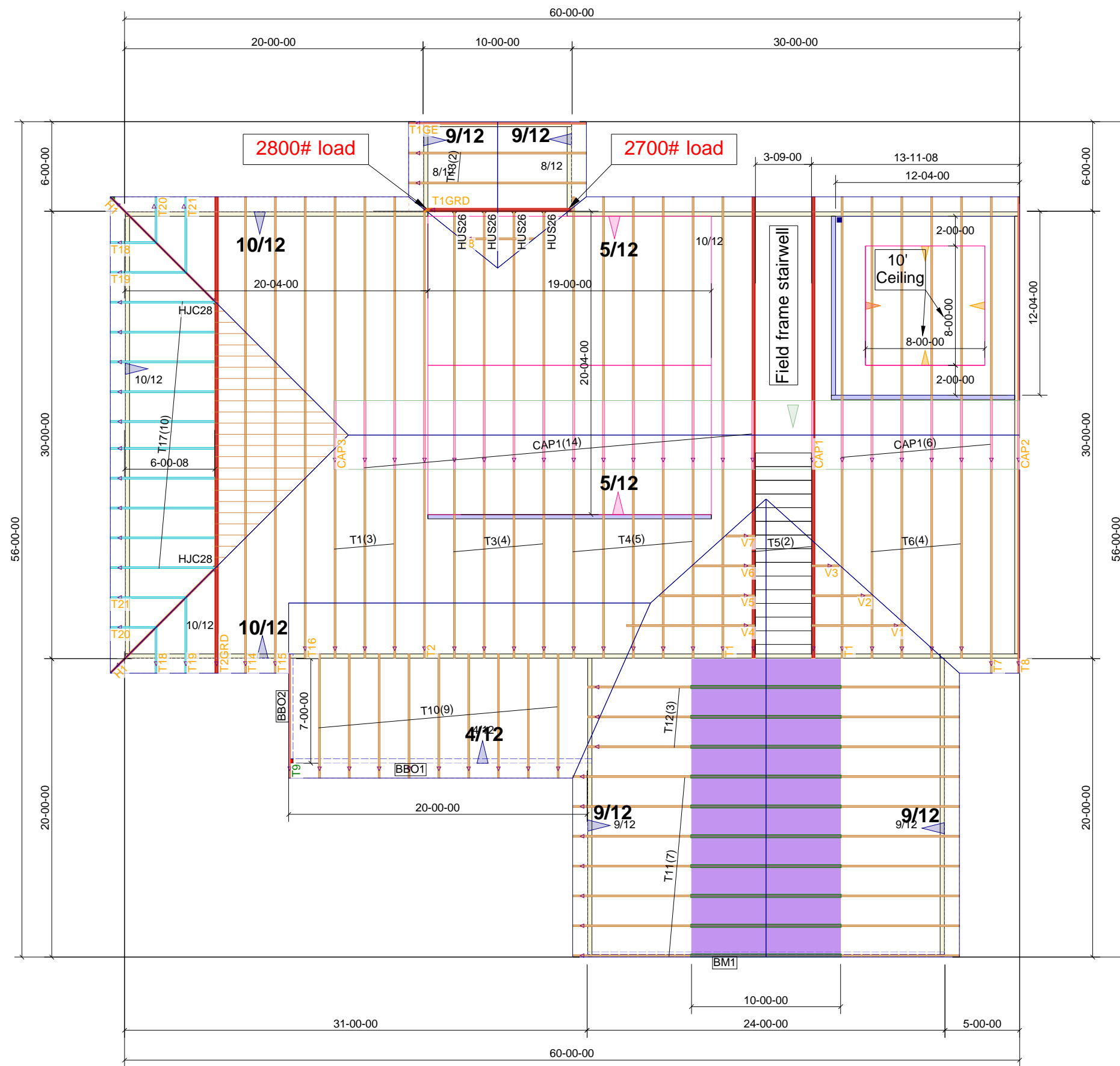


**THIS LAYOUT IS TO BE USED AS A TRUSS PLACEMENT GUIDE ONLY.
PLEASE REFER TO BUILDING PLANS FOR BUILDING CONSTRUCTION AND DETAILS,
SUCH AS PLUMBING OR DUCT DROPS.**



- Notes:**
1. Exterior dimensions shown are assumed to be:
 - Out-to-out of stud
 - Out-to-out of sheathing
 2. Adjust truss locations as needed for plumbing and mechanical clearance. Unless otherwise noted, trusses may be shifted as long as O.C. spacing shown is not exceeded.
 3. Do not cut, drill, or otherwise damage any part of any truss without prior approval from Peak Truss.
 4. Do not approve drawings if any information herein is unclear. Once ordered trusses will be fabricated as approved.
 5. Please contact Peak Truss Builders with any questions. We are available to help any way we can. We can be reached at 919-552-5933 or sales@peaktruss.com

Peak Truss Builders, LLC.
Sample Roof Truss Layout
 Roof Trusses 2' OC
 4/12, 9/12, 10/12 Pitch
 1' Overhang
 9' Ceiling; 2x4 Ext. Walls

Truss Connector Total List

Manuf	Product	Qty
	HJC28	2
	HUS26	4

Products

PlotID	Length	Product	Plies	Net Qty
BM1	24-00-00	1-3/4x16 LP-LVL 2650Fb-1.9E	2	2


Job #
PEAS0311-1

Sample Roof Layout
8675 Main Street
Anywhere NC
30999

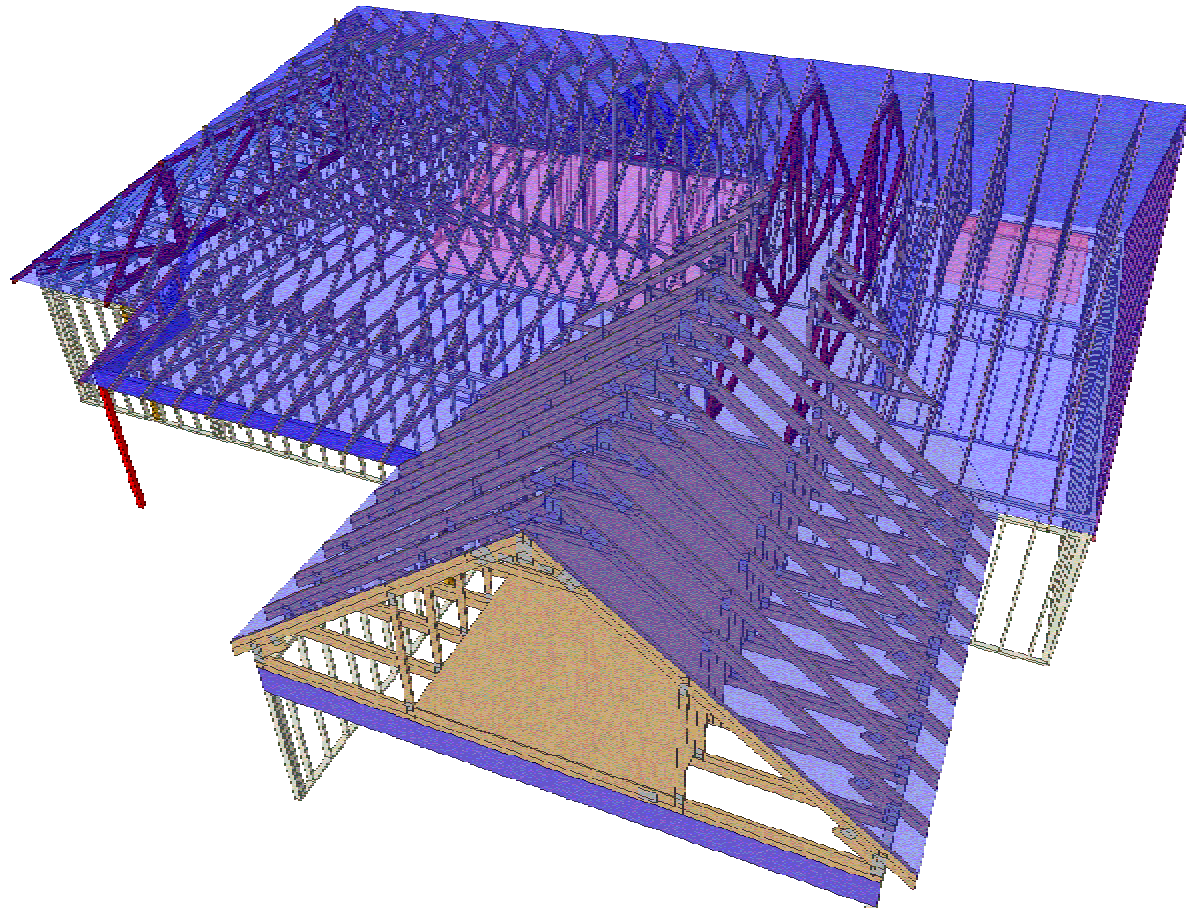
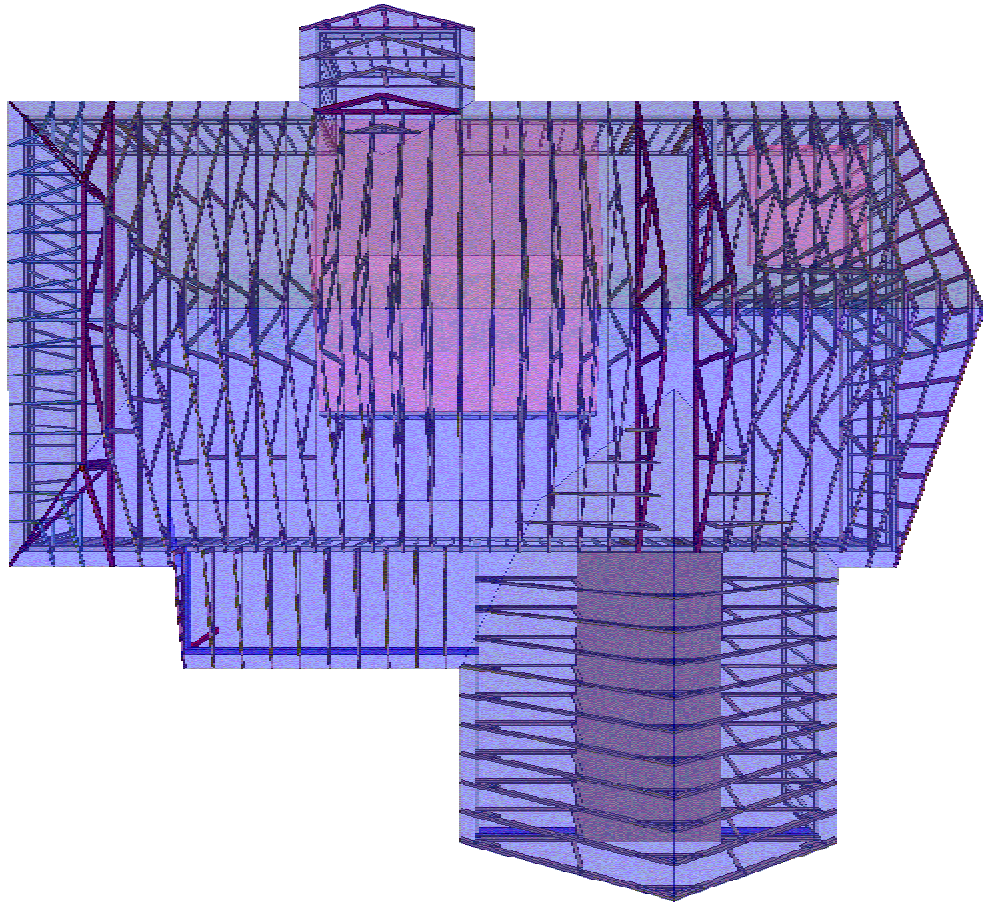
Date Quoted:
03/11/16

Designer:
HP

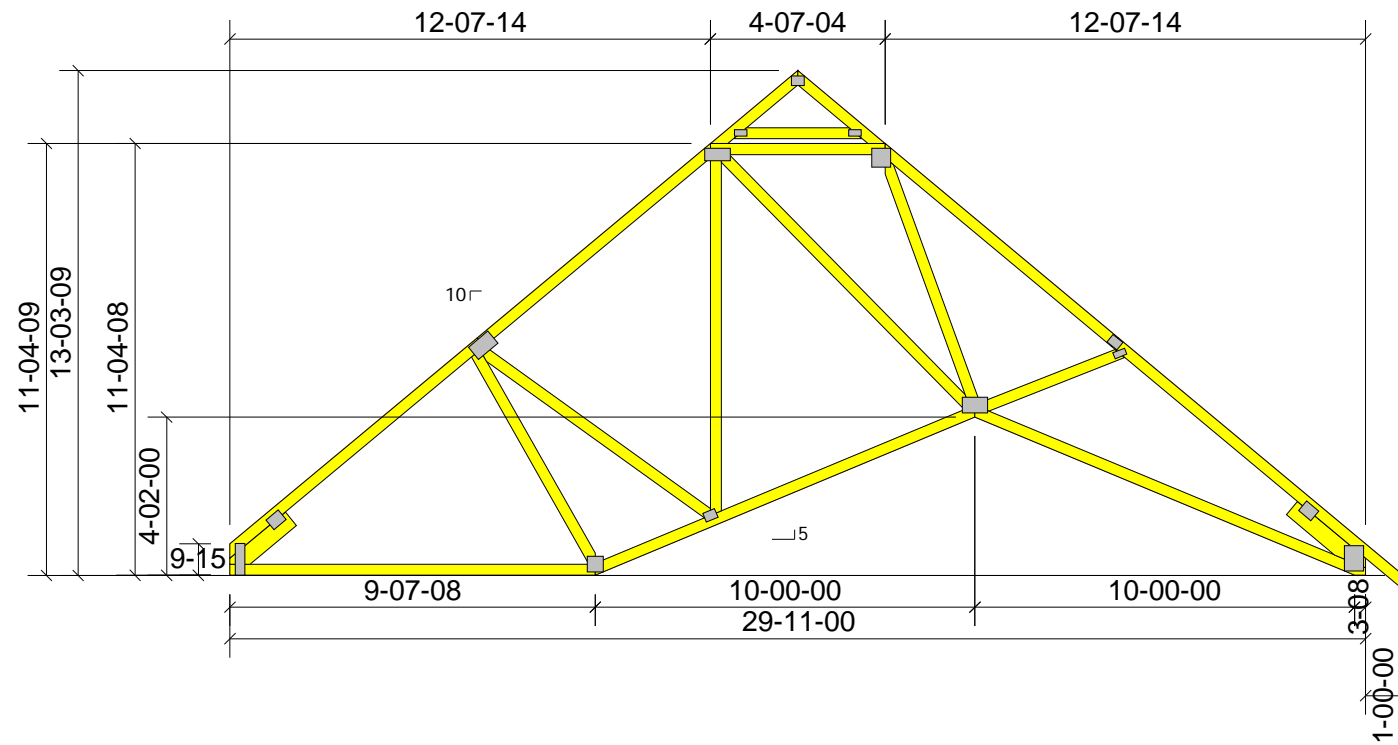
Valued Customer
1490 Comfort Ln
Sanford, NC
27330


Peak Truss Builders, LLC
 PO Box 340, New Hill, NC 27562

THIS LAYOUT IS TO BE USED AS A TRUSS PLACEMENT GUIDE ONLY.
PLEASE REFER TO BUILDING PLANS FOR BUILDING CONSTRUCTION AND DETAILS,
SUCH AS PLUMBING OR DUCT DROPS.



- Notes:
- Exterior dimensions shown are assumed to be:
 - Out-to-out of stud
 - Out-to-out of sheathing
 - Adjust truss locations as needed for plumbing and mechanical clearance. Unless otherwise noted, trusses may be shifted as long as O.C. spacing shown is not exceeded.
 - Do not cut, drill, or otherwise damage any part of any truss without prior approval from Peak Truss.
 - Do not approve drawings if any information herein is unclear. Once ordered trusses will be fabricated as approved.
 - Please contact Peak Truss Builders with any questions. We are available to help any way we can. We can be reached at 919-552-5933 or sales@peaktruss.com



Job #

PEAS0311-1

Sample Roof Layout
8675 Main Street
Anywhere NC
30999

Date Quoted:
03/11/16

Designer:
HP

Valued Customer
1490 Comfort Ln
Sanford, NC
27330

Peak Truss
Builders, LLC
PO Box 340, New Hill, NC 27562

