

## Installation Instructions Version 7.2.3

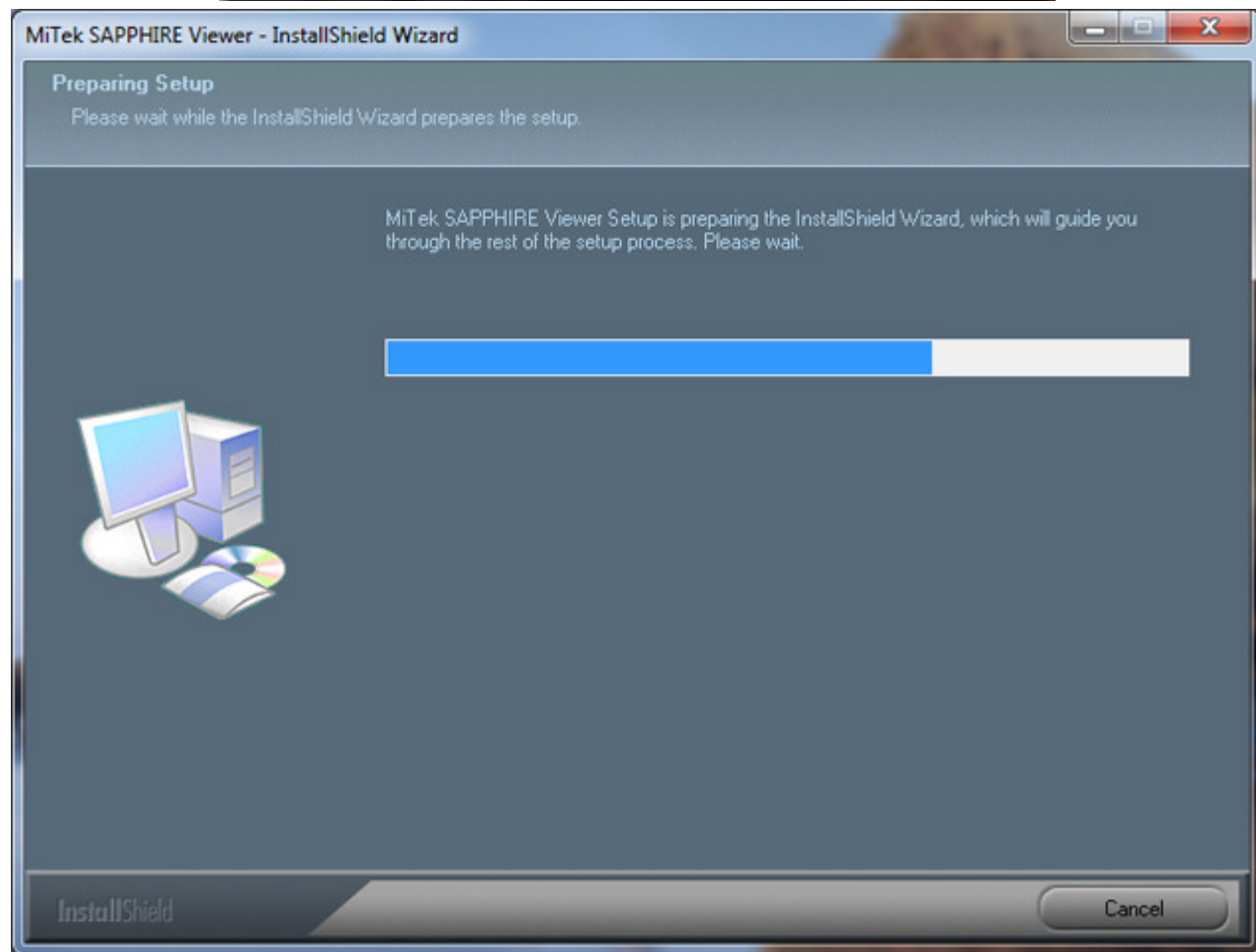
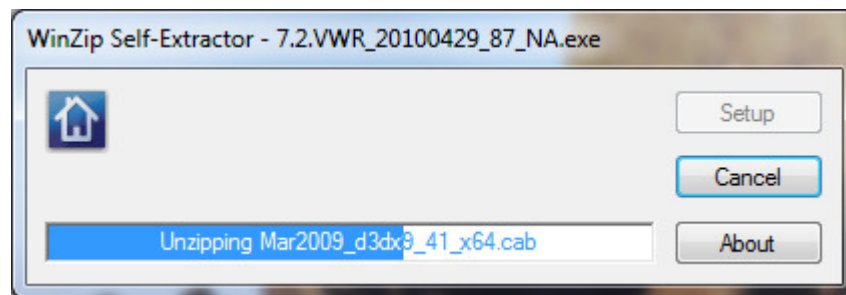
May 12, 2010

## MiTek SAPPHIRE Viewer Installation

### To Install SAPPHIRE Viewer:

**Double Click** the downloaded file.

The Self-Extractor will unzip the file and the Installation Wizard will prepare the setup.

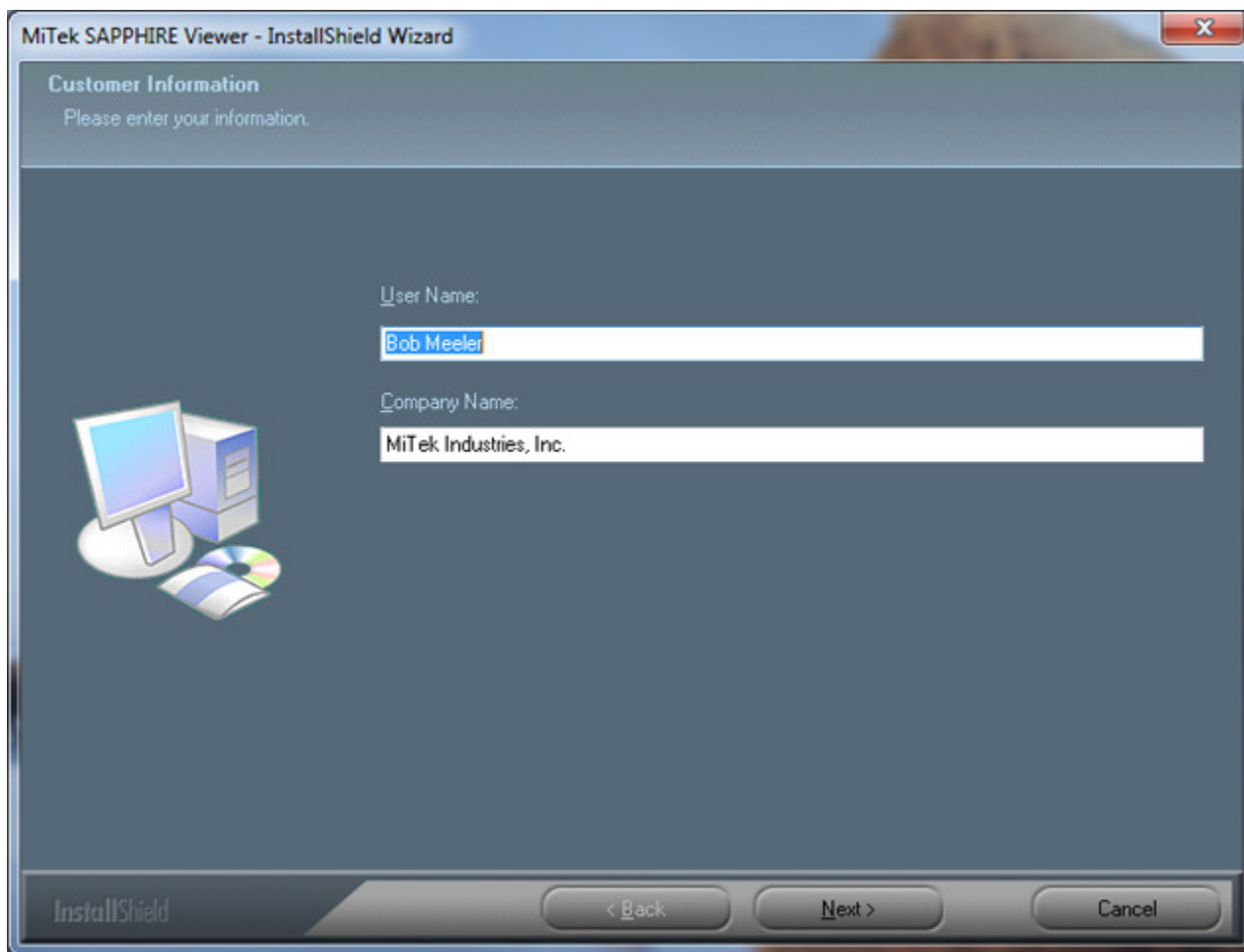


## MiTek SAPPHIRE Viewer Installation

Enter the **User Name** and **Company Name**

Click **Back** to view the previous page

Click **Next** to continue



MiTek SAPPHIRE Viewer - InstallShield Wizard

Customer Information  
Please enter your information.

User Name:  
Bob Meeler

Company Name:  
MiTek Industries, Inc.

InstallShield

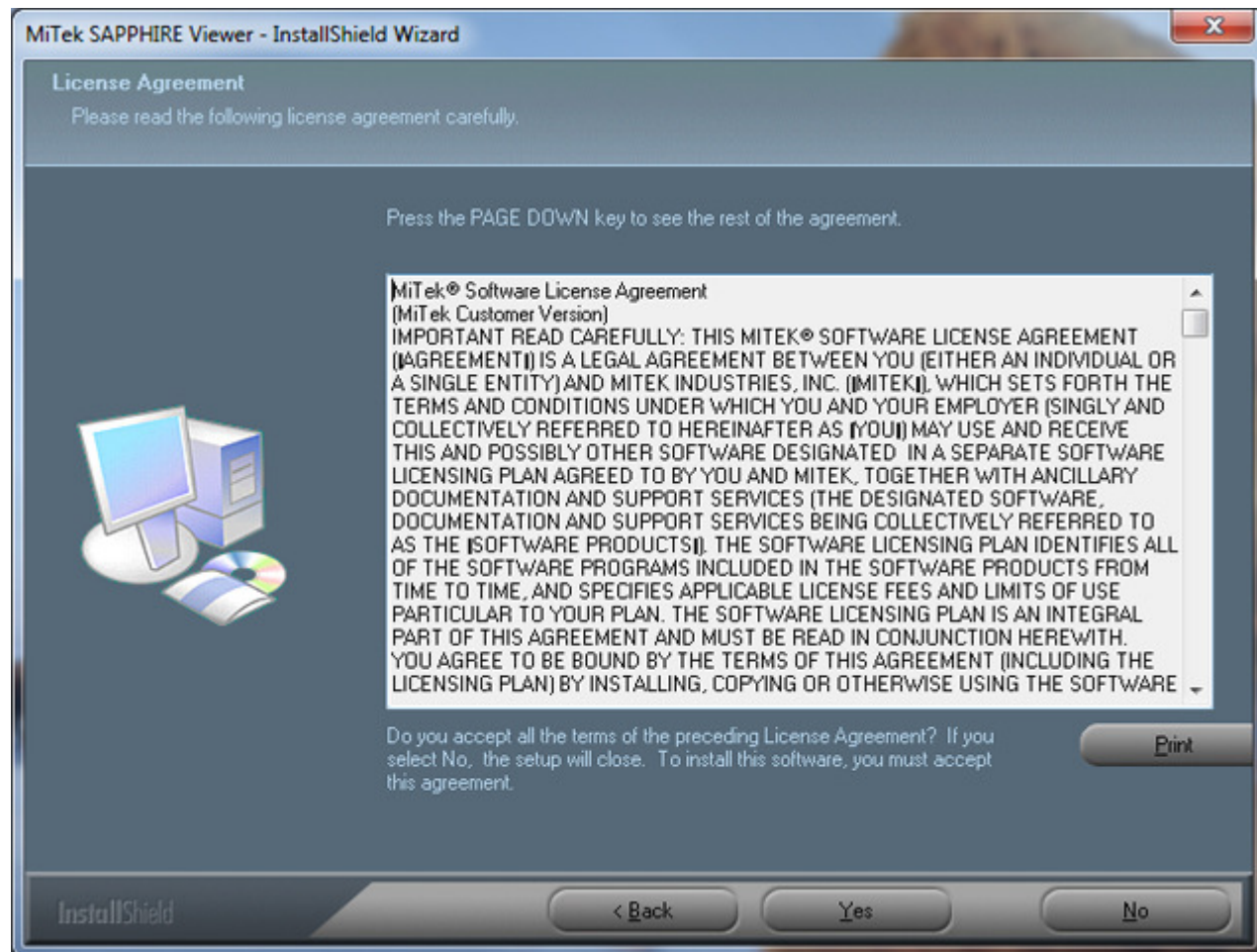
< Back   Next >   Cancel

## MiTek SAPPHIRE Viewer Installation

Accept the **License Agreement**

Click **Back** to view the previous page

Click **Yes** to continue

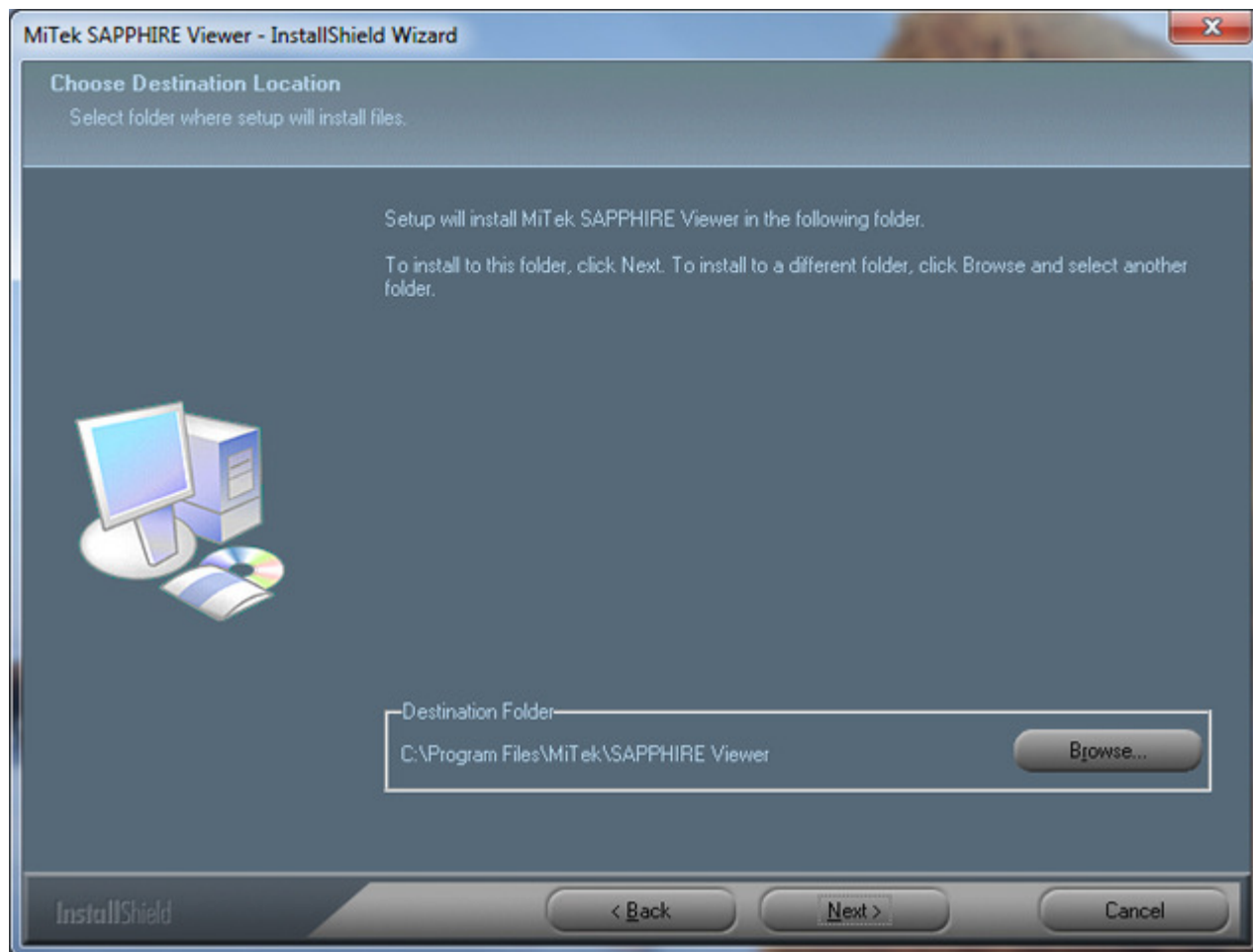


## MiTek SAPPHIRE Viewer Installation

Accept the default **Destination Folder** or  
browse to another location.

Click **Back** to view or make changes to the  
previous page

Click **Next** to continue



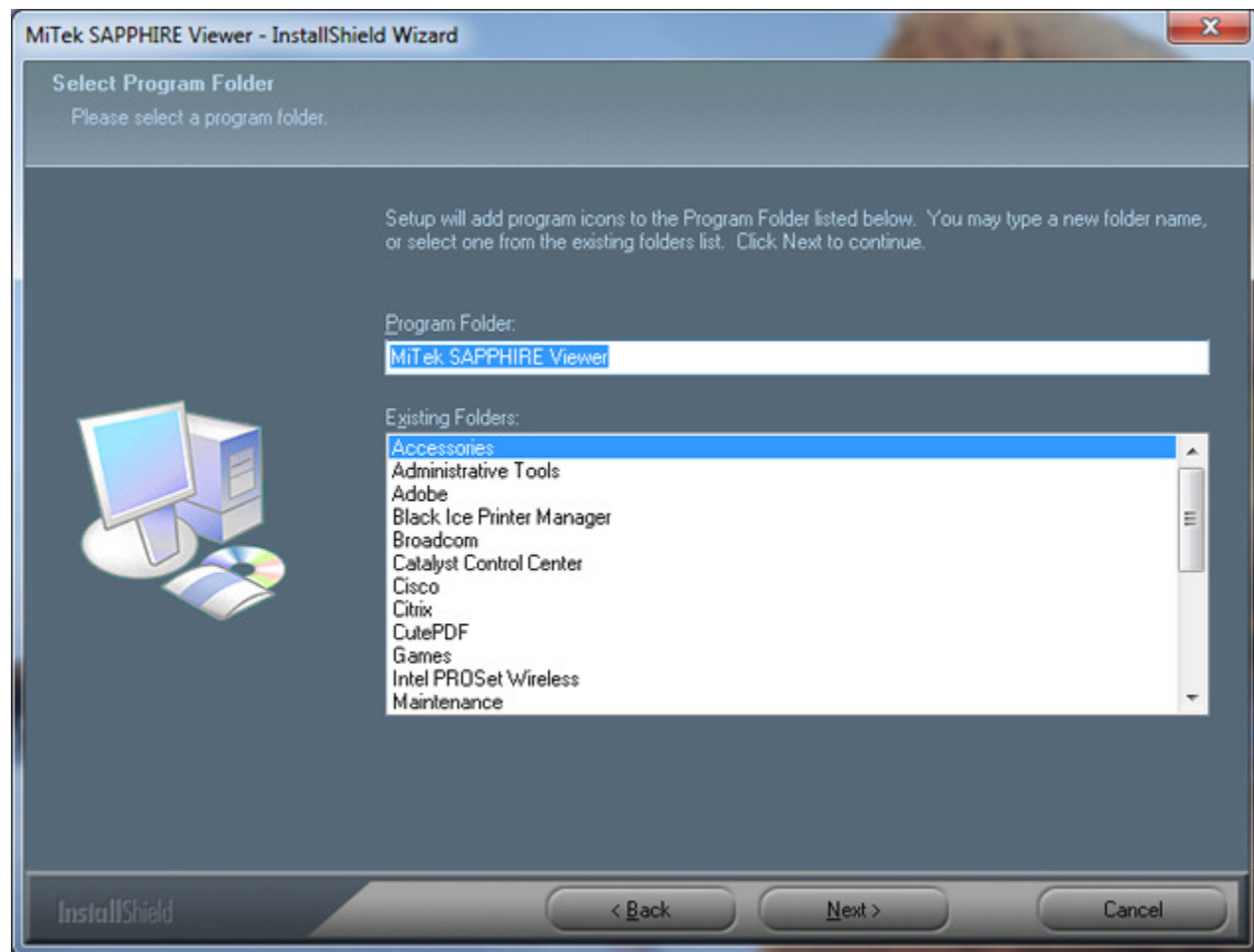


## MiTek SAPPHIRE Viewer Installation

Accept the default **Program Folder** or select another option from the **Existing Folders** list to another location.

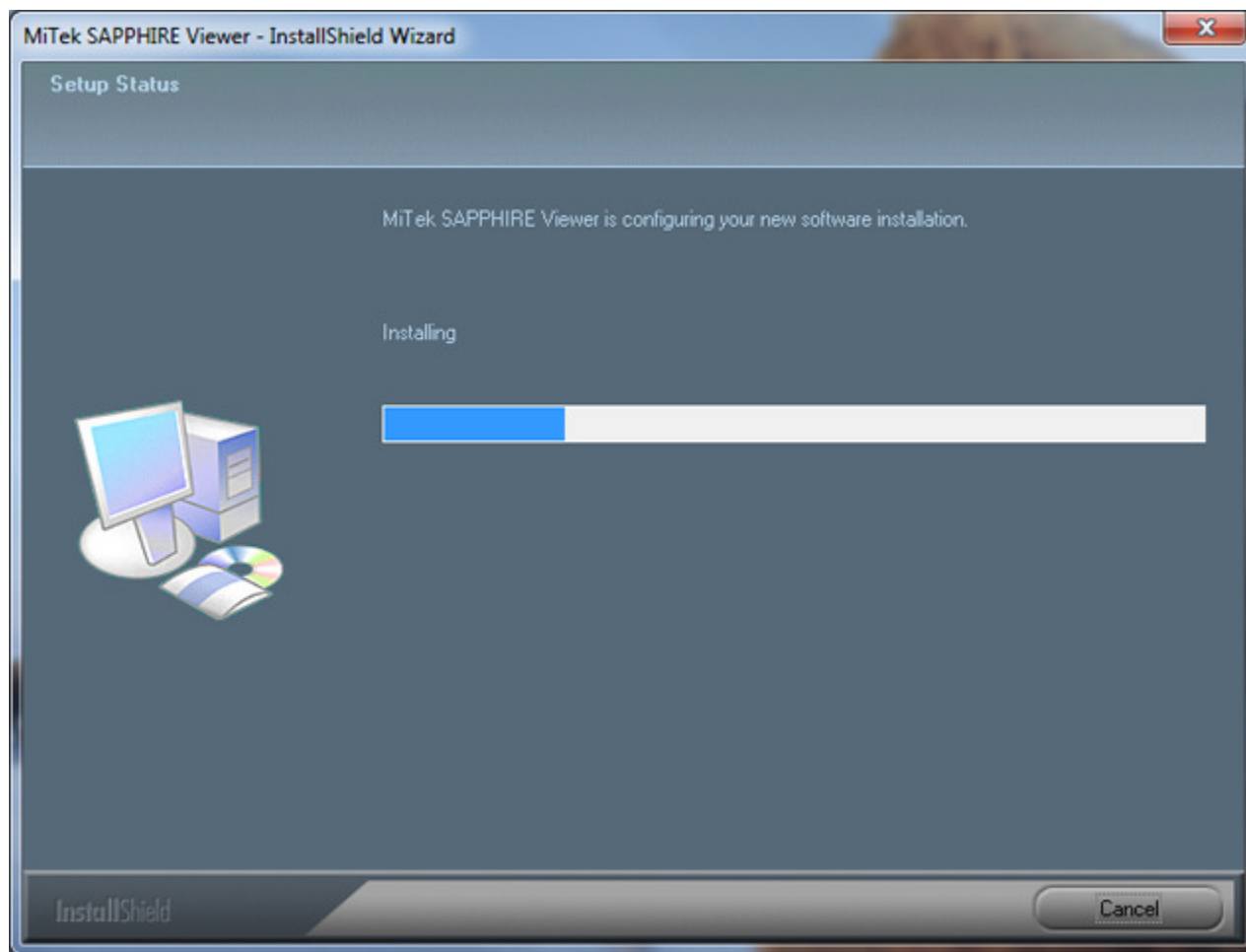
Click **Back** to view or make changes to the previous page

Click **Next** to continue



## MiTek SAPPHIRE Viewer Installation

The installation will begin

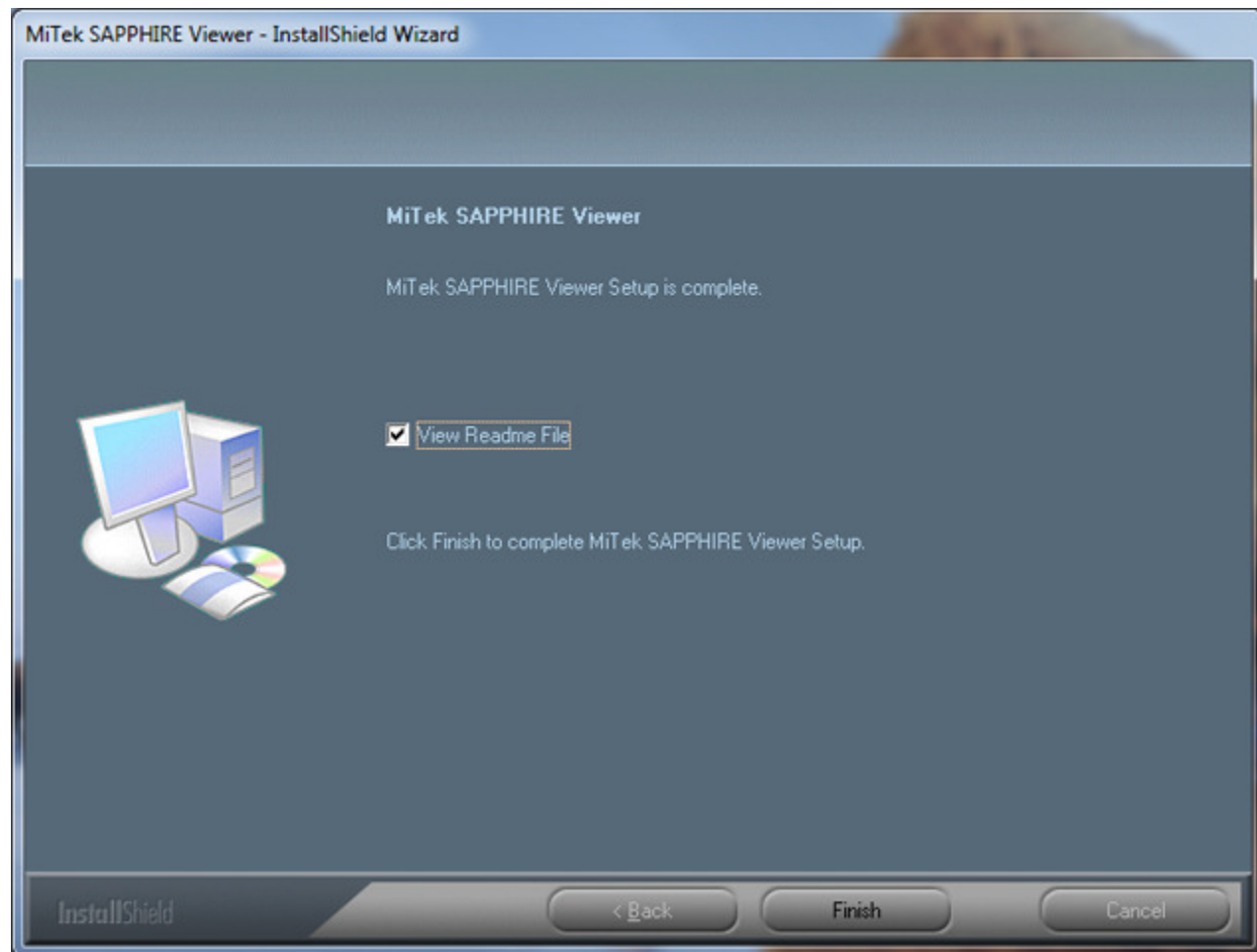


## MiTek SAPPHIRE Viewer Installation

### To View the Readme File:

Leave the check box checked.

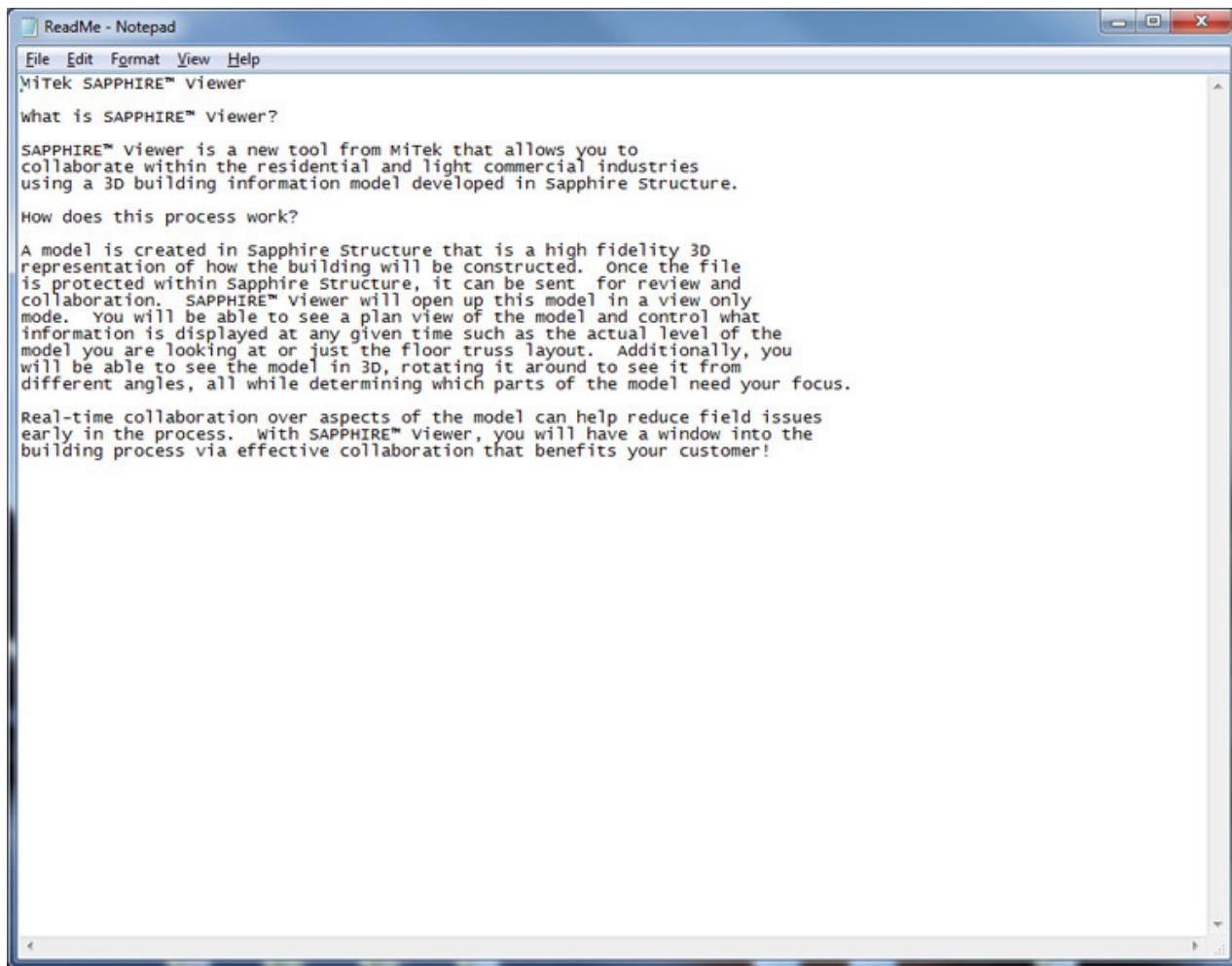
Click **Finish**





## MiTek SAPPHIRE Viewer Installation

Close the **Readme** window when finished.



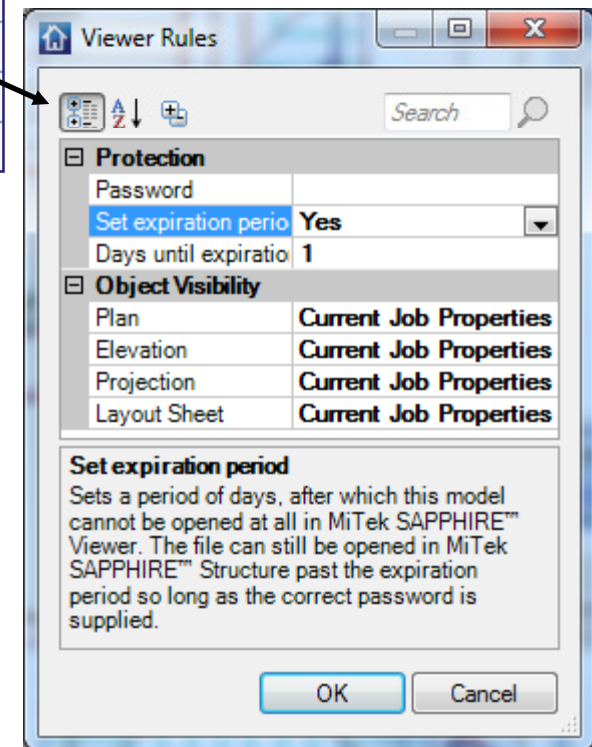
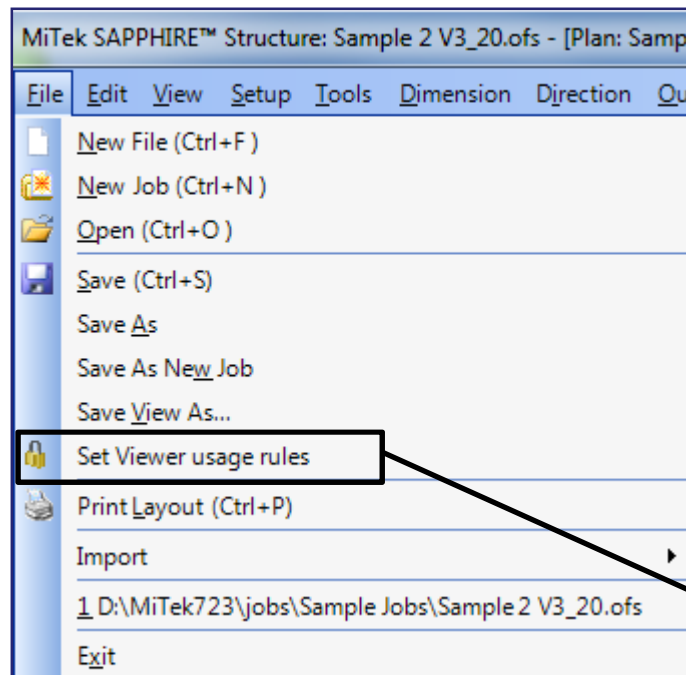
## MiTek SAPPHIRE Viewer SAPPHIRE Structure Setup

Before the Viewer can open a job, each job requires the Viewer rules to be set within SAPPHIRE Structure 7.2.3.

**NOTE:** Viewer will only read SAPPHIRE Structure files that have been protected by 7.2.3. In other words each job requires the Viewer rules (e.g. Password) to be set from 7.2.3 Structure before it can be opened in Viewer.

To view an older job (7.2.2 for example), the SAPPHIRE Structure designer would need to open SAPPHIRE Structure 7.2.3 and follow the procedure below:

- Open the older job in Structure 7.2.3
- Assign Viewer Rules
- Save job
- Open with Viewer

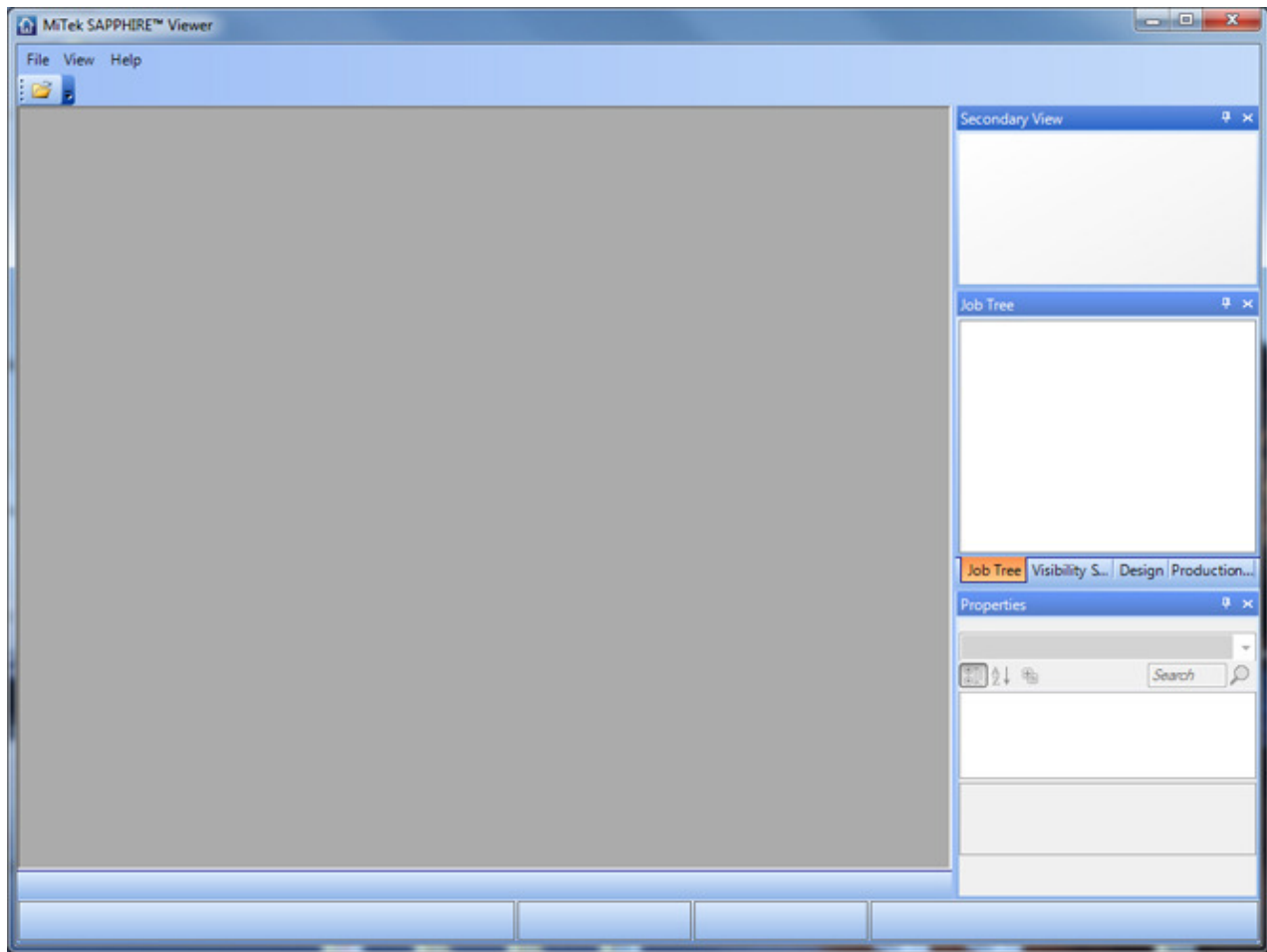
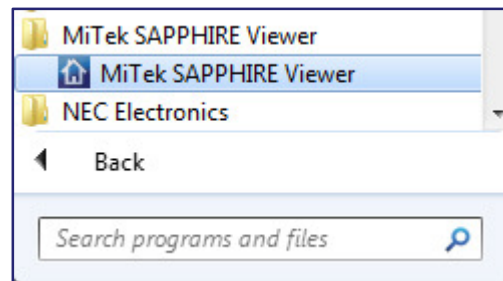


## MiTek SAPPHIRE Viewer

### Launch Viewer

To launch SAPPHIRE Viewer:

Click **Start > All Programs > MiTek SAPPHIRE Viewer > MiTek SAPPHIRE Viewer**.



## MiTek SAPPHIRE Viewer

### Menu – File and View

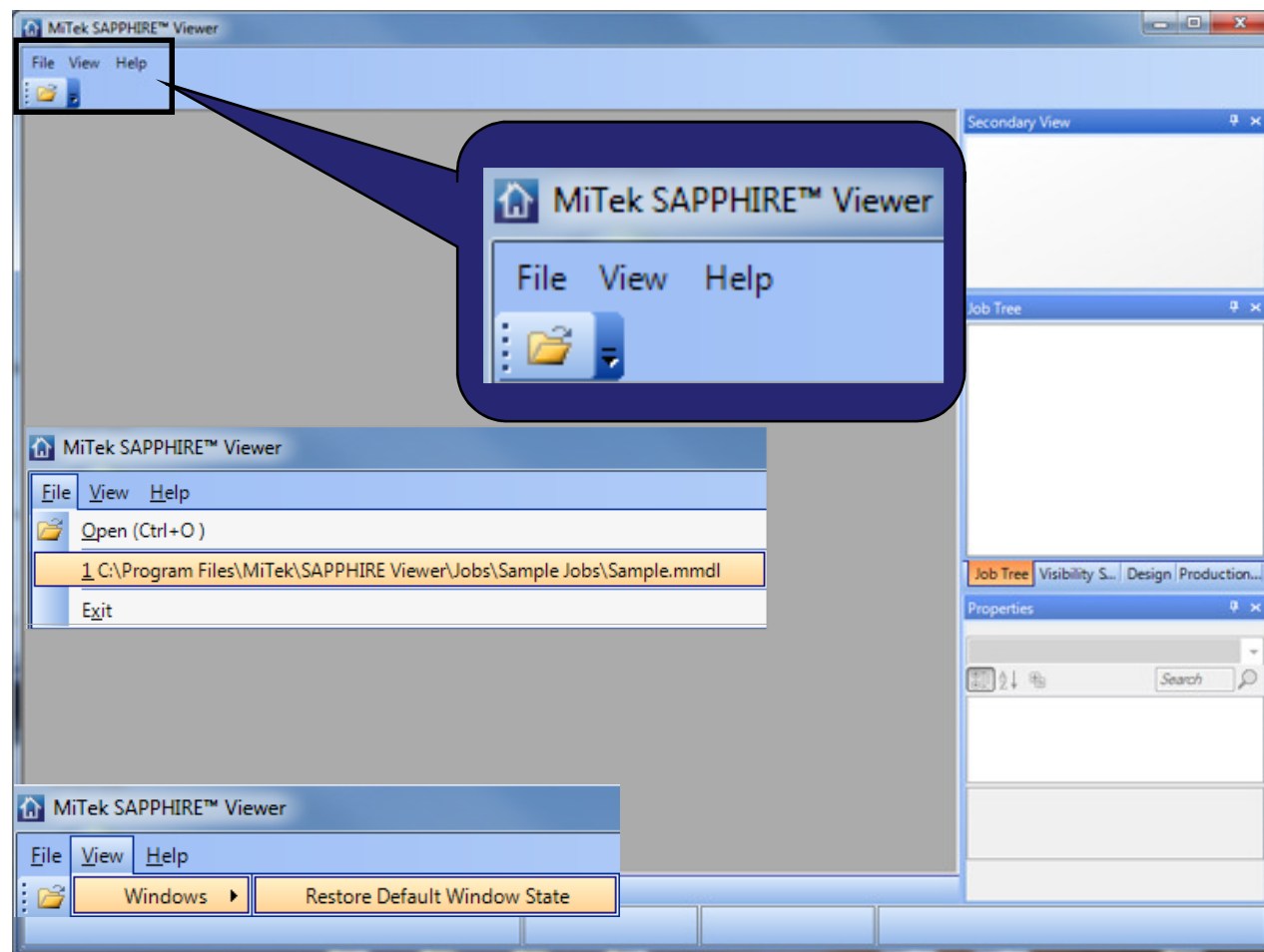
SAPPHIRE Viewer looks very much like SAPPHIRE Structure but with very few menu items.

#### File:

Lists the last few jobs opened in SAPPHIRE Structure. Also has the options for Open and Exit.

#### View:

Will Restore Default Window State.

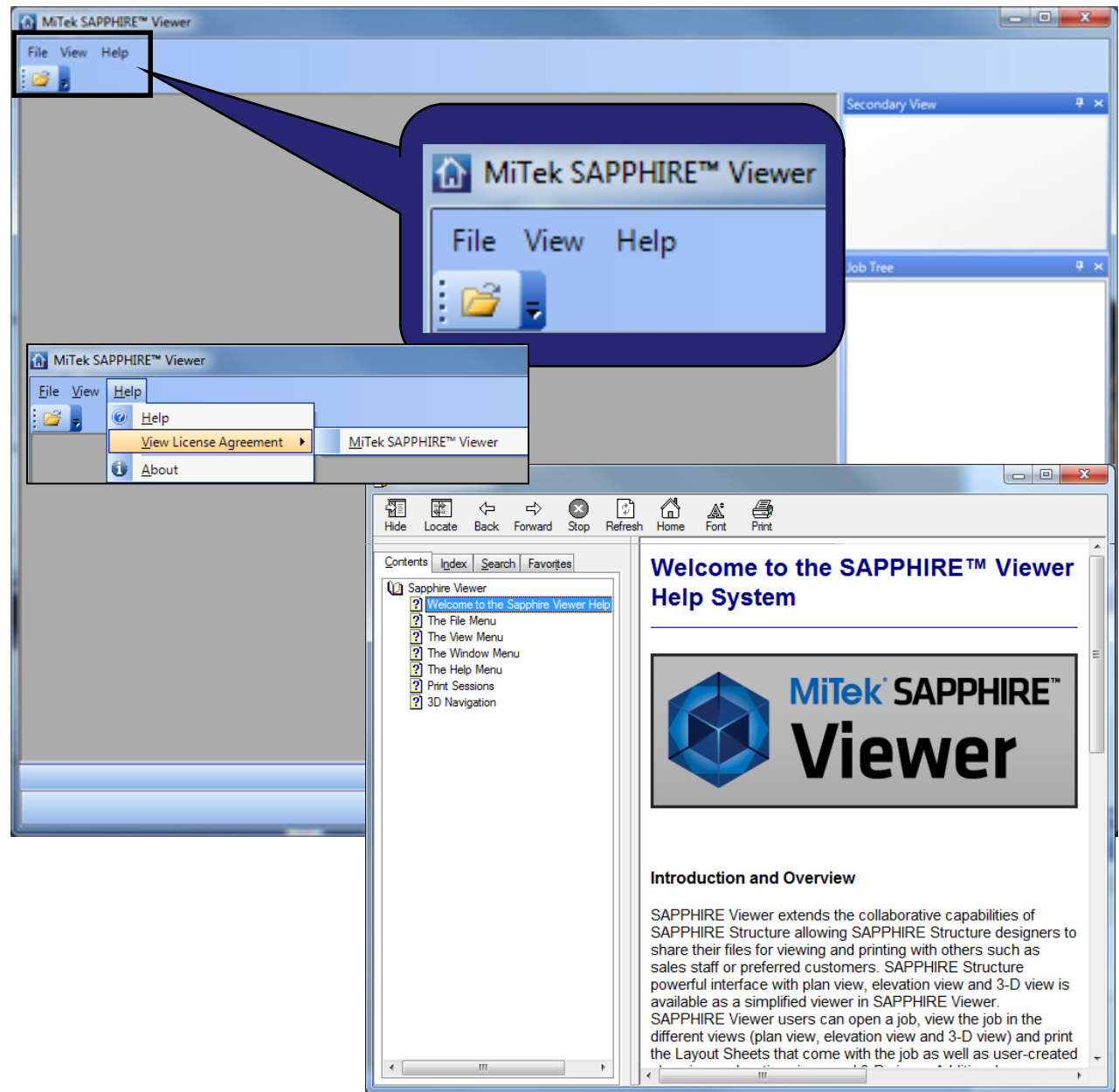


## MiTek SAPPHIRE Viewer Menu – Help (cont)

### Help:

Access Help Files

View License Agreement



## MiTek SAPPHIRE Viewer

### Menu – Help (cont)

#### Help:

**About** – Lists Version Information

**Advanced** – Lists Printers, Computer Information, Products Installed and Activation Status.

